

# NEWBOX

## Euro-standard container NB with access opening


Newbox Euro-standard containers with an access opening enable the contents to be added or removed easily via the opening in the narrow or long side – even in the stack. The design means the organisation and storage of the parts is always visible.



### Applications

Newbox containers with an access opening offer a practical solution for the storage of tools and small parts at set-up locations and for work preparation.

### Special types

All non-stock items are marked thus  and available on request.





**NB 20 V7 3M** Container NB

Ext. dimensions: **400x300x220 mm**  
 Int. dimensions: 358x258x217 mm  
 Useable height: 201 mm  
 Load capacity: 12 kg  
 Volume: 19.9 l

Weight: 1.17 kg  
**Closed flat base V1**  
 1 long side open  
 3 open grips  
 No. per pallet: 80 pcs



**NB 31 V5** Container NB

Ext. dimensions: **400x300x320 mm**  
 Int. dimensions: 358x256x316 mm  
 Useable height: 302 mm  
 Load capacity: 12 kg  
 Volume: 29.0 l

Weight: 1.51 kg  
**Closed flat base V1**  
 1 front side open  
 2 open grips  
 No. per pallet: 56 pcs



**NB 42 V5** Container NB

Ext. dimensions: **600x400x220 mm**  
 Int. dimensions: 555x358x217 mm  
 Useable height: 198 mm  
 Load capacity: 12 kg  
 Volume: 43.1 l

Weight: 2.03 kg  
**Closed flat base V1**  
 1 front side open  
 2 open grips  
 No. per pallet: 44 pcs



**NB 42 V5 3M** Container NB

Ext. dimensions: **600x400x220 mm**  
 Int. dimensions: 555x358x217 mm  
 Useable height: 198 mm  
 Load capacity: 12 kg  
 Volume: 43.1 l

Weight: 2.03 kg  
**Closed flat base V1**  
 1 front side open  
 3 open grips  
 No. per pallet: 44 pcs



**NB 42 V7** Container NB

Ext. dimensions: **600x400x220 mm**  
 Int. dimensions: 555x358x217 mm  
 Useable height: 198 mm  
 Load capacity: 12 kg  
 Volume: 43.1 l

Weight: 2.03 kg  
**Closed flat base V1**  
 1 long side open  
 2 open grips  
 No. per pallet: 44 pcs



**NB 55 V5** Container NB

Ext. dimensions: **600x400x280 mm**  
 Int. dimensions: 553x355x277 mm  
 Useable height: 261 mm  
 Load capacity: 12 kg  
 Volume: 54.4 l

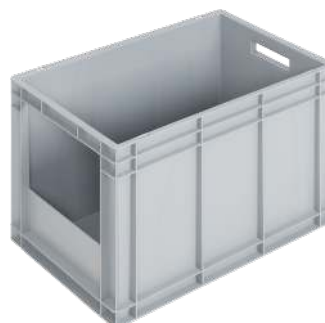
Weight: 2.61 kg  
**Closed flat base V1**  
 1 front side open  
 2 open grips  
 No. per pallet: 32 pcs



**NB 70 V5** Container NB

Ext. dimensions: **600x400x343 mm**  
 Int. dimensions: 557x358x340 mm  
 Useable height: 321 mm  
 Load capacity: 12 kg  
 Volume: 67.8 l

Weight: 2.65 kg  
**Closed flat base V1**  
 1 front side open  
 2 open grips  
 No. per pallet: 36 pcs



**NB 80 V5** Container NB

Ext. dimensions: **600x400x423 mm**  
 Int. dimensions: 555x355x420 mm  
 Useable height: 401 mm  
 Load capacity: 12 kg  
 Volume: 82.8 l

Weight: 3.83 kg  
**Closed flat base V1**  
 1 front side open  
 1 open grip  
 No. per pallet: 20 pcs

