

NEWBOX

Euro-standard lid NB

The Newbox lid can be operated single-handedly and is available in two versions: loose for placing on the container or with hinges and closures. It is adapted to the Euro-standard container, is easy to handle and the wearing parts can be replaced at any time.



Applications

The Newbox lid combined with a Newbox container provides optimal protection of the contents of the container against external influences.

Available sizes

Basic dimensions (L×W in mm)
300×200
400×300
600×400

Suitable for Newbox stackable containers

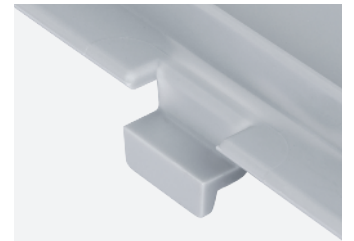
Hinge for lid



NBC 32




NBC 43



NBC 64

Special types

All non-stock items are marked thus  and available on request.





NBC 32 SG Loose lid NB

Ext. dimensions: **300x200 mm**

Weight: 151 g

No. per pack: 30 pcs

for loosely laying on



NBC 64 SG Loose lid NB

Ext. dimensions: **600x400 mm**

Weight: 728 g

No. per pack: 10 pcs

for loosely laying on



NBC 32 Hinged lid NB

Ext. dimensions: **300x200 mm**

Weight: 150 g

No. per pack: 30 pcs

2 hinges



NBC 64 Hinged lid NB

Ext. dimensions: **600x400 mm**

Weight: 716 g

No. per pack: 10 pcs

2 hinges



NBC 43 SG Loose lid NB

Ext. dimensions: **400x300 mm**

Weight: 279 g

No. per pack: 20 pcs

for loosely laying on



NBC S Sliding closure for lid NB

Weight: 4 g

Material: PA

No. per pack: 100 pcs

un-assembled accessories for euro-norm case & lid also unit of 100 pieces available



NBC 43 Hinged lid NB

Ext. dimensions: **400x300 mm**

Weight: 274 g

No. per pack: 20 pcs

2 hinges



NBC SC Snap closure for lid NB

Weight: 3 g

Material: POM

un-assembled, loose accessories for euro-norm case & lid